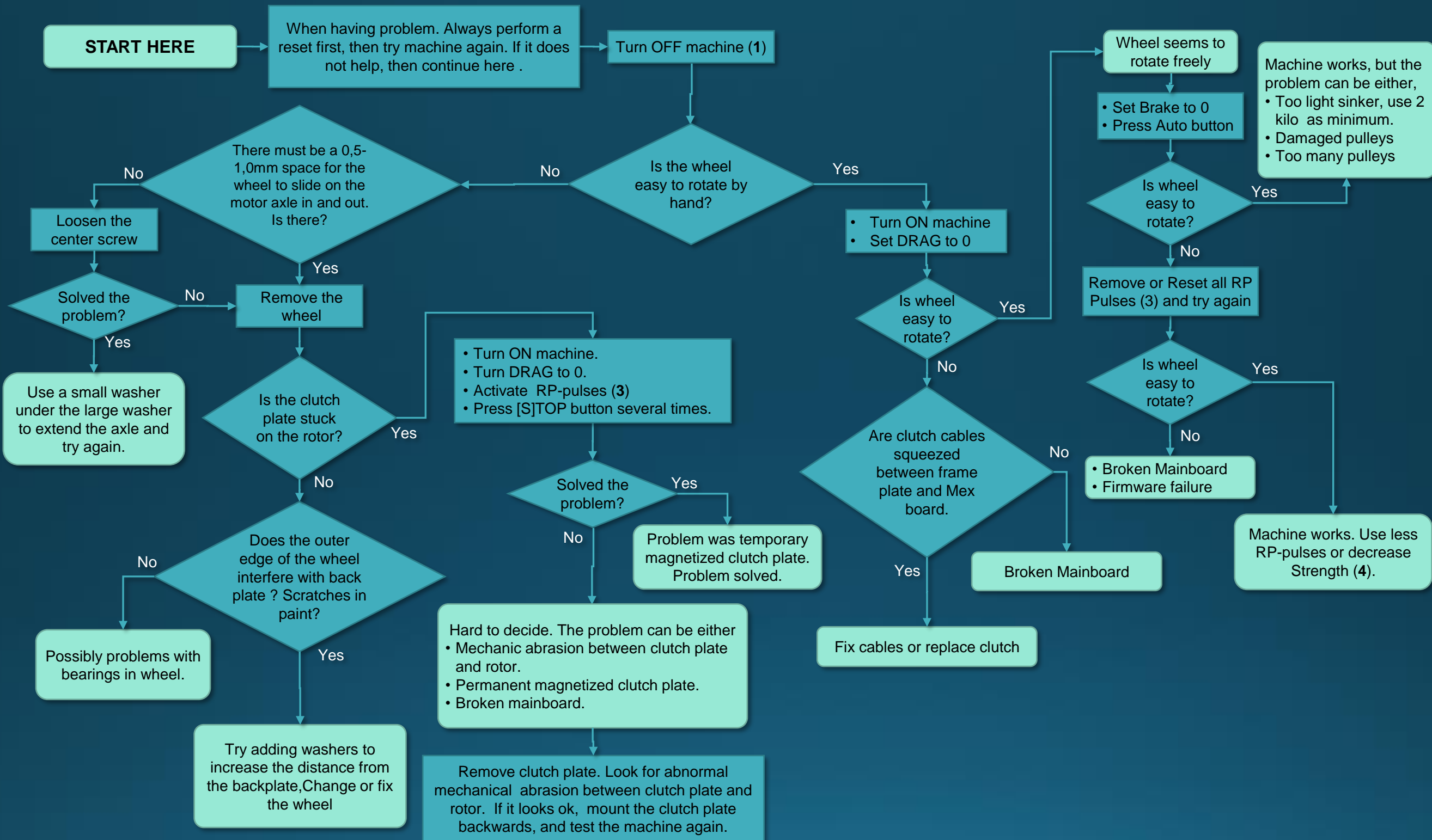


## Flowchart to solve Wheel, Clutch and Motor problems in the BJ5000Ex. Revision 4

Wheel moves slowly out or even gets stuck when it should pay out. Page 2

Wheel does not haul up, or motor does not start. Page 3



- 1) During test the term “Easy to rotate” is found. This means that user should be able to move the wheel pulling the line with less than 0,5 Kilo’s drag force .
- 2) Clutch plate is the “disc” between the clutch rotor and wheel.
- 3) Activate RP (Reverse Polarity Pulses) by setting Pulses=3, Puls time=0,1, Puls pause=0,1, Strength=50%. See user manual chapter **E45]**
- 4) Parameter Strength **[E45PPP PP]** is only available in Ex machine with firmware 1.1642 or newer.

